



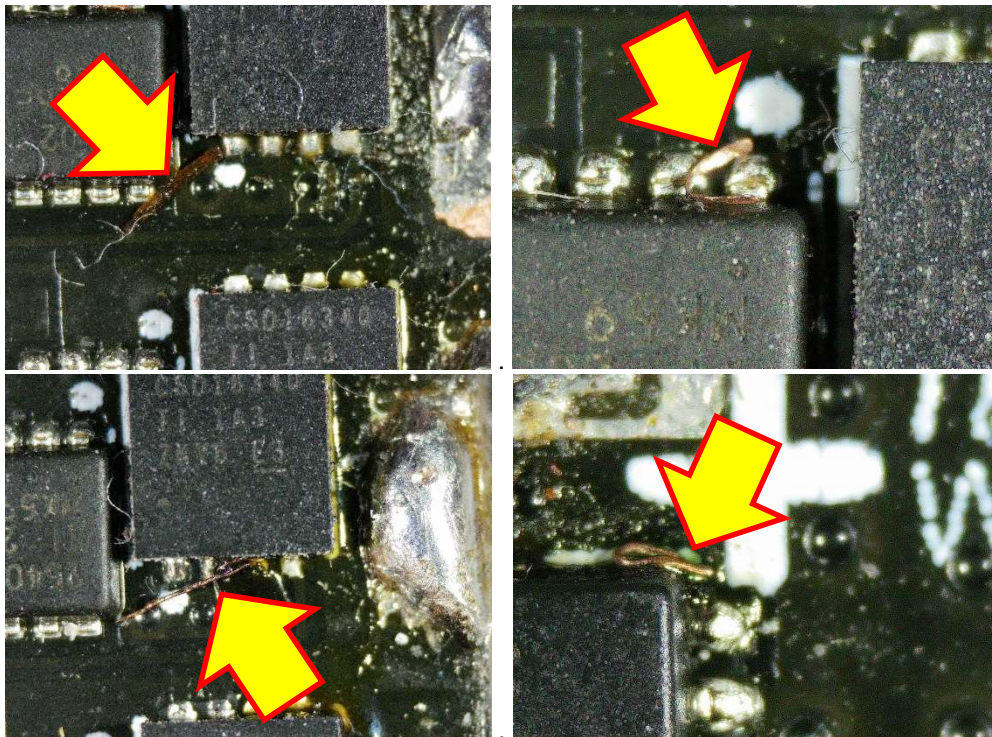
www.KCRacing.net

TECH CORNER

ESC Protection

We have had some recent reports of ESCs that have demonstrated cogging on the track after several laps of successful operation. As we have explained in prior Tech Notes and white papers there are many causes for cogging. However, upon reviewing magnified photos of the ESCs in question it had been found that there was copper and brass debris on top of the ESC.

Below are photos of the top of ESCs showing debris on the top of the ESC and in some cases on the MosFET pin connections of the ESC. Debris on the ESC can cause cogging or complete failure of the components on the boards.



In a car that the ESC is installed the ESC should be protected from debris by placing a piece of electrical tape over the top of the board. Prior to placing the electrical tape on the ESC use a dry soft toothbrush to clean the top of the board from any potential debris that may be on the board.

The best alternative is applying an electrical shrink tube over the board prior to installation into the car to protect the top and bottom of the ESC. (When using shrink tube be careful not to overheat the components on the board).

Now Get out... Go racing... and most of all enjoy!